



**APPROVED  
TRAINING  
PROGRAM**

# SCHOLARSHIP INFORMATION

**A guidebook to scholarships  
and financial aid within NBHWC  
Approved Training Programs**

[www.nbhwc.org](http://www.nbhwc.org)  
Updated 2025





NBHC Approved Programs must meet a minimum standard in the areas of content taught, contact hours with students, faculty requirements, and development and assessment of practical skills of students.

Individuals wishing to become National Board Certified Health & Wellness Coaches (NBC-HWC) must complete an NBHC Approved Training Program.

Look for the **NBHC Seal of Approval** when finding a training program that is right for you.



**APPROVED  
TRAINING  
PROGRAM**

Programs included in this guide meet or exceed the NBHC published standards for health and wellness coach training and education.

Graduates from these programs qualify to apply for the National Board Certification Examination and have the opportunity to earn the designation, National Board Certified Health & Wellness Coach (NBC-HWC).

For a complete list of programs that are approved by NBHC, please visit:  
<https://nbhwc.org/find-an-approved-training-program>



## **The National Board for Health & Wellness Coaching envisions a world where all people thrive.**

Scholarship offerings promote equity of access to training opportunities for health coaches from all backgrounds, and are a step towards reducing health inequities and improving healthcare outcomes for all.

Please note that, while each of these programs meet the published NBHWC standards, they are distinct in many ways. Interested individuals should do their due diligence prior to enrolling in a training program.

For a complete list of programs that are approved by NBHWC, please visit:  
**<https://nbhwc.org/find-an-approved-training-program>**



**This guidebook contains information submitted to NBHWC by NBHWC Approved Training Programs.**

**Additional scholarships may be available.**

**Please contact programs directly for additional information.**

● *Payment Plan Available*



● *GI Bill Eligible*

## Health & Wellness Coaching Course

Provided by: **A Wellness Revolution** ●

A Wellness Revolution offers a significant discount for students currently enrolled in a university or professional training program. They only accept a few students for each cohort. It is on a first come first serve basis.

**Requirements:** Students must be currently enrolled in a university or professional training. It will be necessary to send in a student ID from the current university/training.

<https://www.awellnessrevolution.com/pricing-and-payment-plans/>

[info@anthropedia.org](mailto:info@anthropedia.org) | Cathleen Beerkens

## Well-being Coach Certification Program

Provided by: **Anthropedia**

Anthropedia offers need-based financial aid.

**Requirements:** Students will need to fill out the financial aid section on the general program enrollment form. The review committee will process the form after completing an interview, which is required of all financial aid applicants.

[amuszynski@anthropedia.org](mailto:amuszynski@anthropedia.org) | Alinda Muszynski



## Health Coach Certificate

Provided by: **Bucks County Community College** ●



The Bucks County Community College Foundation offers scholarships to students pursuing their education at Bucks. For financial needs-based scholarships, students are responsible to file the appropriate FAFSA (Free Application for Federal Student Aid) prior to completing a scholarship application.

**Requirements:** Each scholarship has its own set of requirements. Full details can be found on the Bucks' website and Scholarship Universe. <https://www.bucks.edu/scholarships/>

[scholarships@bucks.edu](mailto:scholarships@bucks.edu)



## M.A. degree of Integrative Health Studies or Certificate in Integrative Health and Wellness Coaching



Provided by: **California Institute of Integral Studies** ●

California Institute of Integral Studies (CIIS) offers a variety of scholarships to support prospective students:

**Opportunity Scholarship:** Automatically considered for all newly admitted students, these scholarships range from \$500 to \$3,000.

**Diversity Scholarship:** Aimed at fostering a diverse student body, CIIS offers multiple scholarships, including two awards of \$12,500, twelve of \$10,000, and thirty-one of \$5,000 for the 2024-2025 academic year.

**Fellowships and Assistantships:** CIIS provides competitive fellowships and assistantships, including teaching and research positions, to support students financially and academically.

### Requirements:

#### ***Opportunity Scholarship:***

- Be fully admitted to a degree program.
- Enroll full-time.
- Submit the FAFSA promptly (international students should complete the International Student Scholarship Application).

#### ***Diversity Scholarship:***

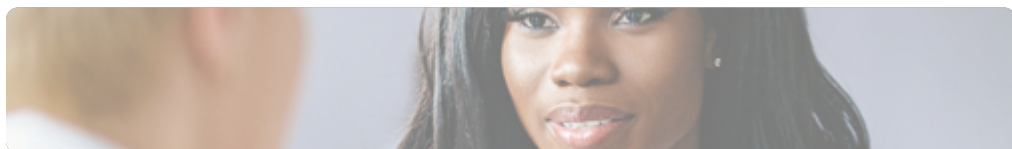
- Submit a Diversity Scholarship Application.
- Complete the standard admissions application for their chosen program.
- Provide a personal statement detailing their commitment to diversity and inclusion.

#### ***Fellowships and Assistantships:***

- Submission of additional application materials.
- Demonstration of relevant experience or skills.
- Commitment to specific work hours or project involvement.

<https://www.ciis.edu/admissions-and-financial-aid/costs-and-aid/>

[finaid@ciis.edu](mailto:finaid@ciis.edu)



## Master Certified Wellness Coach

Provided by: **Catalyst Coaching Institute**



Catalyst Coaching Institute provides the Catalyst Ambassador Scholarship! This opportunity is extended to individuals who are fluent in both English and Spanish and who desire to pursue a career as a National Board-Certified Health & Wellness Coach in the United States of America. Your skill to coach individuals in both English and Spanish is so needed in the wellness industry!

**Requirements:** The scholarship is in the amount of \$1622 towards purchase of the Master Certified Wellness Coach (MCWC) National Board Package program through Catalyst Coaching Institute.

The application includes the following:

1. Essay submission
2. Brief Interview

<https://www.catalystcoachinginstitute.com/pathway-to-national-certification/>

**results@catalystcoachinginstitute.com | Suzanna Cooper**



## Health and Wellness Coach Training

Provided by: **Coach Training EDU** ●



Coaches can receive a scholarship between 50-75% towards the total program cost based on their income. We also include 12 and 18 month payment plan options.

**Requirements:** Coaches are required to submit the attached free scholarship application. Once received, our team reviews their submission and considers their income.

<https://forms.gle/RMfvU7XbaHrf7r447>

[support@coachtrainingedu.com](mailto:support@coachtrainingedu.com) | Brittany Macdonald

## Post-Graduate Certificate in Positive Psychology Health and Wellness Coaching

Provided by: **College of Executive Coaching**

College of Executive Coaching is committed to making high-quality coach training accessible to individuals who aspire to become certified health and wellness coaches. To support those with financial need, we offer the Health and Wellness Coach Training Scholarship, providing up to \$400 toward the tuition of our certification program.

**Requirements:** Applications will be reviewed by a small committee based on:

- The clarity and sincerity demonstrated in the response
- The clarity of the stated financial need
- The potential to contribute positively to the coaching profession
- All decisions are final

Scholarships will be awarded on a rolling basis, subject to the availability of scholarship funds, and will be based purely on the judgment of our organization's leadership team using the above application process and criteria. <https://executivecoachcollege.com/contact/>

[katie@executivecoachcollege.com](mailto:katie@executivecoachcollege.com) | Katie Hurtado

## Certificate in Health and Wellness Coaching 2nd path: AAS Degree in Health and Wellness Promotion: Health and Wellness Coaching Specialty Option



Provided by: **College of Lake County**

Students pursuing our coaching programs can apply for a wide variety of scholarships, grants, and loans.

**Requirements:** Each scholarship has distinct requirements. Details are available at: <https://www.clcillinois.edu/get-started/financial-aid/types-of-financial-aid/scholarships>.  
<https://www.clcillinois.edu/get-started/financial-aid>

[jpabedinkas@clcillinois.edu](mailto:jpabedinkas@clcillinois.edu) | Joana Pabedinkas

## Duke Health & Well-Being Coach Training

Provided by: **Duke Integrative Medicine**

Duke Health & Well-Being (DHWCT) has limited funds available for partial financial assistance for the DHWCT. The funds may cover up to 10% of the registration fee.

**Requirements:** To be considered, please submit your financial assistance application before the early registration deadline for your desired course. <https://dhwprograms.dukehealth.org/uFAQs/what-are-my-options-for-financial-assistance-aid-do-you-accept-fafsa-or-the-gi-bill-is-this-training-eligible-for-job-training-or-placement-programs/>

[natasha.dobbins@duke.edu](mailto:natasha.dobbins@duke.edu) | Natasha Allen



## Wellness Coach Certification

Provided by: **Expert Coach Center** ●



Scholarships are awarded to Wellness Warriors who are leaders in their field and intend to utilize their coaching certification to give back within their community or to the field of coaching.

**Requirements:** A personal statement of why the applicant is deserving of the scholarship and how they intend to utilize their coaching certification, a letter of recommendation from a non-family member/friend who can attest to their character, and an academic transcript (degree completion not required).

<https://www.expertcoachcenter.org/scholarships>

[hollymiller@expercoachcenter.com](mailto:hollymiller@expercoachcenter.com) | Holly Miller

## Health Coach Certification Program

Provided by: **Functional Medicine Coaching Academy**

The Functional Medicine Coaching Academy (FMCA), in partnership with the Institute for Functional Medicine (IFM) and with the support of VoLo Foundation, offers Community Impact Scholarships to prospective students. These full scholarships cover tuition for FMCA's Health Coach Certification Program and are awarded to individuals dedicated to advancing health equity and wellness in underserved communities.

**Requirements:**

- Demonstrate a strong commitment to promoting functional medicine and health coaching in underserved communities.
- Show leadership and initiative in expanding access to holistic health solutions.
- Complete the scholarship application process, which includes outlining their mission and how they plan to contribute to their communities as a certified health coach.

<https://functionalmedicinecoaching.org/scholarships/>

[kerry@functionalmedicinecoaching.org](mailto:kerry@functionalmedicinecoaching.org) | Kerry Shultz

## Mental Health Coach Training Program

Provided by: **Headspace**



Headspace offers the opportunity to apply for a limited partial scholarship award.

**Requirements:** Scholarship decisions are based on demonstrated financial need and the applicant's goals for using the training and certification to have the greatest impact in communities, particularly underserved ones.

<https://organizations.headspace.com/headspace-training-institute>

[shelby.garay@headspace.com](mailto:shelby.garay@headspace.com)

## Holistic Wellness Pathway

Provided by: **Hill College** ●

Hill College offers myriad scholarships through our financial aid department.

[https://www.hillcollege.edu/Admissions\\_Aid/FinancialAid/Scholar-Grants-WkStudy.html](https://www.hillcollege.edu/Admissions_Aid/FinancialAid/Scholar-Grants-WkStudy.html)

[amkinsey@hillcollege.edu](mailto:amkinsey@hillcollege.edu) | Amy Kinsey

## Root-Cause Health Coaching™

Provided by: **Lifestyle Prescriptions® University**

\$1,500 scholarship / Tuition Reduction

\$10,000 tuition credit/scholarship

**Requirements:** No requirements. Schedule a call with Emma Patricio

<https://www.lifestyleprescription.tv/>

[emma@lifestyleprescriptions.tv](mailto:emma@lifestyleprescriptions.tv) | Emma Patricio

## Post-Baccalaureate Certificate in Health and Wellness Coaching (MUIH PBC in Health and Wellness Coaching)



Provided by: **Maryland University of Integrative Health** ●

Maryland University of Integrative Health (MUIH) offers federal loans, grants, and limited need-based scholarships to both in-state and out-of-state students. Students who are interested in applying for one or more scholarships and or grants must submit an online application separately from the admissions application.

**Requirements:** Each scholarship or grant has its own eligibility requirements. To qualify for scholarships or grants, students must first be admitted to MUIH and submit a Free Application for Federal Student Aid (FAFSA) form.

<https://muih.edu/admissions/financial-aid/>

[Finaidmuih@muih.ndm.edu](mailto:Finaidmuih@muih.ndm.edu) | Monthserrat Boston

## AAS Degree in Wellness and Health Promotion

Provided by: **Northeast Wisconsin Technical College**

Northeast Wisconsin Technical College provides financial aid services to those students who qualify for financial aid. NWTC as a whole has scholarships that students can apply for.

[https://www.nwtc.edu/admissions-and-aid/paying-for-college\\_](https://www.nwtc.edu/admissions-and-aid/paying-for-college_)

[abby.helnore@nwtc.edu](mailto:abby.helnore@nwtc.edu) | Abby Helnore

## Health and Wellness Coaching Academy

Provided by: **Nutrition Factors** ●

HWCA offers partial scholarships to students that have personal or financial needs.

**Requirements:** The student must submit a scholarship application detailing their certain circumstances on why they need the scholarship.

<https://www.nutritionfactors.com/hwca-course/>

[hwca@nutritionfactors.com](mailto:hwca@nutritionfactors.com) | Janet Jackson

## Community As Medicine Training Program

Provided by: **Open Source Wellness** ●



Open Source Wellness is a 501c3 non-profit organization that is dedicated to providing direct services and increasing access to health coaching in medically underserved communities. We are committed to creating a world in which everyone experiences abundant health, wellbeing, and human connection, especially those who have been historically excluded and marginalized. The tuition you pay for this program goes directly to helping to expand OSW's mission, vision, and reach to help others. We have limited financial scholarship available and try to offer it equitably to as many applicants as we can in order to make our training program more accessible.

We are committed to making our programs accessible to a diverse range of participants, regardless of financial circumstances. To support this, we offer a sliding scale payment system that allows individuals to choose the option that best fits their financial situation, while also fostering community care. If you are being sponsored by an organization or anticipate reimbursement from your workplace, please reach out to us directly. We're happy to discuss how we can best support you in arranging your tuition through these channels.

### *\$4,500 - Flexible Tuition:*

This option offers a reduced rate for those who need some financial flexibility. It allows you to participate at a lower cost while still contributing to the program.

### *\$4,000 - Supported Tuition:*

This level is available for those who need more financial assistance in order to participate in the training.

### *\$3,500 - Community Tuition:*

This level is available for those who need more financial assistance in order to participate in the training.

**Requirements:** Fill out application.

Community Tuition + Additional Need Based Scholarship:

This level is available for those who need more financial assistance beyond our Community Tuition in order to participate in the training. Amount of scholarship ranges based on need and availability of funds per cohort.

<https://www.opensourcewellness.org/camtp>

[camtp@opensourcewellness.org](mailto:camtp@opensourcewellness.org) | Crystilla Herbkersman

## Master of Kinesiology in Integrative Wellness

Provided by: **Point Loma Nazarene University**



With a focus on whole health, the M.S. Integrative Wellness program at Point Loma Nazarene University provides \$12,000 in annual scholarships.

**Requirements:** Students must meet the admissions criteria and be accepted to the program.

<https://www.pointloma.edu/graduate-studies/programs/integrative-wellness-ms>

[jmatthew@pointloma.edu](mailto:jmatthew@pointloma.edu) | Jessica Matthews

## Certificate of Achievement in Health and Wellness Coaching

Provided by: **San Diego Mesa College**

San Diego Mesa College offers a variety of scholarship and financial aid options to students. Prospective students can find out more information about scholarship options and financial aid here: <https://www.sdmesa.edu/student-support/scholarships/index.shtml>

[kgraham@sdccd.edu](mailto:kgraham@sdccd.edu)



## B.S. in Health and Wellness Coaching



Provided by: **Southern Connecticut State University,**  
**Dept. of Public Health** ●

As an undergraduate degree program, all students in the major have access to university financial aid and scholarships. The university has a foundation that provides hundreds of scholarships to students each semester; many are focused on student related characteristics (degree programs, areas of residence, demographics). There are over 350 scholarships available for students to review and apply.

**Requirements:** Because these are university based scholarships, students need to be matriculated into a degree program at the university. Then they would search the database and find those that are eligible and fill out the application form. Students can apply to multiple scholarships through one application on the university website.

<https://inside.southernct.edu/foundation-scholarships>

[risiskyd1@southernct.edu](mailto:risiskyd1@southernct.edu)



## Coaching Intensive Practicum at The Institute

Provided by: **Integrative Nutrition**



Successful completion of IIN's foundational training, the Health Coach Training Program (or an approved equivalent) is required to take this course. Scholarship recipients who have not completed this pre-requisite will also receive full tuition to the Health Coach Training Program as part of their award package.

<https://www.integrativenutrition.com/coaching-intensive-practicum>

[support@coachingintensivepracticum.com](mailto:support@coachingintensivepracticum.com) | Amy Kobos

## AIM Health & Wellness Coaching

Provided by: **University of California, Susan Samueli Integrative Health Institute**

Partial tuition scholarship available for all UC Irvine staff, faculty, students and Alumni. Partial tuition scholarship available for qualified applicants who work in LA County. This funding is supported through a grant from Cedars-Sinai to expand access to care for underserved communities or those with behavioral health conditions.

**Requirements:** Must currently live or work in Los Angeles County and plan on using Health and Wellness Coaching skills to address and support those in the LA community, especially those with behavioral health and SUD challenges.

We are looking for learners who are general medical or behavioral workforce team members.

<https://ssihi.uci.edu/education/continuing-integrative-health-education/aim-health-wellness-coaching-certificate-program/>

[ssihieducation@hs.uci.edu](mailto:ssihieducation@hs.uci.edu)



## Integrative Health Coach Training

Provided by: **University of Health and Performance**



Scholarships for our Integrative Health Coaching program are available through the Team RWB Health and Wellness Scholarship Fund. The Team RWB Health and Wellness Scholarship Fund is a key initiative designed to provide Veterans and Service Members with the training and certifications that benefit both the individual and the Veteran community. The fund is open to Veterans and Service Members who are committed to leading in-person or virtual engagement activities for Team RWB while advancing their personal and professional goals in the health and fitness industry.

**Requirements:** You must be accepted into the program before applying for the scholarship.

<https://teamrwb.org/programs/health-wellness-scholarship>

[info@teamrwb.org](mailto:info@teamrwb.org)

## Integrative Health and Well-being Coaching

Provided by: **University of Houston**

10% discount for those who register by the published Early Registration Deadline.

**Requirements:** Submit an application, get approved for the program, and pay their program fees by the published Early Registration Deadline.

<https://uh.edu/population-health/education/ihwc/>

[uhihwc@uh.edu](mailto:uhihwc@uh.edu) | Adam Martinez, ED



## M.A. Integrative Health & Wellbeing Coaching; Certificate, Post-Baccalaureate Integrative Health & Healing-Health Coaching Track



Provided by: **University of Minnesota** ●

Bakken Center Scholarships range from \$1,500 to \$4,000 and are determined during application review.

**Requirements:** Students enrolled in Master of Arts in Integrative Health and Wellbeing Coaching program Student enrolled in Integrative Therapies & Healing Practices certificate program. Recipients must be active students registered for the term(s) when the scholarship is applied. Students receiving the Regents Scholarship or Senior Citizen Education Program discount are not eligible.

<https://csh.umn.edu/academics/scholarships>

**csh-academics@umn.edu | Christina Owen**

## Certificate in Health & Wellness Coaching

Provided by: **University of Vermont**

Out of state students can receive in-state tuition rates on the Professional and Continuing Education Certificate in Health and Wellness Coaching.

**Requirements:** Out-of state student

<https://learn.uvm.edu/program/integrative-health-and-wellness-coaching-certificate/>

**learn@uvm.edu**

## Master of Science in Integrative Health and Wellness

Provided by: **University of West Georgia** ●

Out-of-State/International Tuition Waived – if qualified, student pays Georgia in-state tuition <https://www.westga.edu/isap/waivers.php>

General university scholarships <https://www.westga.edu/student-services/financialaid/scholarships.php>

**finaid@westga.edu**

## Wave Coach Training Program

Provided by: **Wave**



Wave offers financial assistance in the form of full or half pro bono seats to 20% of our training community.

Prospective recipients can indicate their interest in financial assistance at the end of an application. There is a box that says 'Anything else to add' and that is where interest will be stated. Once we know that financial assistance is needed, we will send a supplemental form that asks the applicant to share more about their need (full or half pro bono seat) and how receiving assistance would enable their ability to attend the program and benefit themselves and their community. We collect requests for financial assistance up to 3 weeks before the start of the cohort. When the financial assistance deadline is met, we then review all requests and make our determinations about how to allocate our 20% budget. We then write to all who submitted requests to share our determination, and confirm with the awardees that they are able to commit to the next cohort of our program.

**Requirements:** We know that financial assistance can play a valuable role in helping people to participate in this program, and to bring their learnings to their community. We ask those who are able to complete the program without financial assistance to not request it so the funds can benefit those who would not be able to complete the program otherwise.

<https://www.wavelife.io/coach-training-program>

**coach-training@wavelife.io**





## Core Coach Training Program

Provided by: **Wellcoaches**

We believe that pathways to health and well-being are a right and must be accessible by all. By having diverse, inclusive, and equitable organizations, coaches and their clients will build a long-lasting, positive legacy for future generations.

Wellcoaches is committed to providing free and low-cost opportunities for training and education to students who have been economically disadvantaged, underserved, or impacted by systemic racism and other structures that prevent growth. We are pleased to award up to 10 Coaching scholarships twice each year: June 20 and December 20.

What the Scholarship Includes:

Tuition for Modules 1-3 (\$3095 value)

In addition to three mentoring sessions to prepare for the practical exam, you will be offered three meetings with a peer mentor to provide support during the training (\$300 value)

The Coaching Psychology Manual (\$60 value)

**Requirements:** Underrepresented students and communities: Black, Brown, Indigenous and other people of color, ethnic or religious minorities, lower socio-economic or caste status, LGBTQIA+ persons, elderly, economically or educationally disadvantaged, formerly incarcerated individuals and immigrants.

Must have at least an Associate's Degree or 4,000 hours of work experience.

Scholarship recipients are asked to contribute to the greater good by providing 4 hours of peer mentoring to a student in a subsequent program

<https://www.wellcoacheschool.com/commitment-to-diversity>

[erika@wellcoaches.com](mailto:erika@wellcoaches.com) | Erika Jackson



## Live Well Wellness Global Coach Training

Provided by: **Workplace Options**



We offer a 10% discount for active or retired military. In addition, Workplace Options' own employees may apply and participate in the program at no charge.

**Requirements:** Proof of military service

[https://www.workplaceoptions.com/wellbeing\\_solutions/live-well-wellness-global-coach-training/](https://www.workplaceoptions.com/wellbeing_solutions/live-well-wellness-global-coach-training/)

[wpocoachtraining@workplaceoptions.com](mailto:wpocoachtraining@workplaceoptions.com)



## Payment Plans



### Health and Wellness Coach Training at Coach Training EDU

12 and 18 month payment plan options.

Email: [support@coachtrainedu.com](mailto:support@coachtrainedu.com) - Brittany Macdonald

### Wellness Coach Certification at Expert Coach Center

6 month or 12 month payment plan for no additional charge.

Email: [hollymiller@expercoachcenter.com](mailto:hollymiller@expercoachcenter.com) - Holly Miller

### Community as Medicine Training Program at Open Source Wellness

Sliding scale options and flexible payment plans at no additional cost

Email: [camtp@opensourcewellness.org](mailto:camtp@opensourcewellness.org) - Crystilla Herbkersman

### Professional Wellness & Health Coach Certification at Real Balance Global Wellness Services Inc.

Easy payment plan with no additional fees or interest.

Email: [deborah@realbalance.com](mailto:deborah@realbalance.com)



# GI Bill Eligible



The GI Bill is a Department of Veterans Affairs education benefit earned by members of Active Duty, Selected Reserve and National Guard members and their families. The benefit is designed to help service members and eligible veterans cover the costs associated with getting an education or training.

The following NBHWC Approved Training Programs are eligible for the GI Bill. Please contact programs directly for details.

**Health & Wellness Coaching Course** at **A Wellness Revolution**

Email: [info@awellnessrevolution.com](mailto:info@awellnessrevolution.com) - Cathleen Beerkens

**Health Coach Certificate** at **Bucks County Community College**

Email: [accounts@bucks.edu](mailto:accounts@bucks.edu) - Lizanne Watts

**M.A. degree of Integrative Health Studies or Certificate in Integrative Health and Wellness Coaching** at **California Institute of Integral Studies**

Email: [findaid@ciis.edu](mailto:findaid@ciis.edu)

**Certificate in Health and Wellness Coaching or AAS Degree in Health and Wellness Promotion: Health and Wellness Coaching Specialty Option** at **College of Lake County**

Email: [bgaroutte@clcollinois.edu](mailto:bgaroutte@clcollinois.edu) - Brian Garoutte

**Master of Science in Integrative Health and Wellness** at **Creighton University**

Email: [veterans@creighton.edu](mailto:veterans@creighton.edu) - Jennifer Austin

**Holistic Wellness Pathway** at **Hill College**

Email: [cclay@hillcollege.edu](mailto:cclay@hillcollege.edu) - Cindy Clay



**Health Education and Wellness Coaching or Wellness Coaching Certificate** at **Loma Linda University**

Email: [eguerpo@llu.edu](mailto:eguerpo@llu.edu) - Esther Guerpo

**Post-Baccalaureate Certificate in Health and Wellness Coaching (MUIH PBC in Health and Wellness Coaching)** at **Maryland University of Integrative Health**

Email: [Finaidmuih@muih.ndm.edu](mailto:Finaidmuih@muih.ndm.edu) - Philip Conrad

**Post-Baccalaureate Certificate in Health and Wellness Coaching (MUIH PBC in Health and Wellness Coaching)** at **Maryland University of Integrative Health**

Email: [Finaidmuih@muih.ndm.edu](mailto:Finaidmuih@muih.ndm.edu) - Monthserrat Boston

**Health and Wellness Coaching Academy** at **Nutrition Factors**

Email: [hwca@nutritionfactors.com](mailto:hwca@nutritionfactors.com) - Janet Jackson

**Master of Kinesiology in Integrative Wellness** at **Point Loma Nazarene University**

Email: [jmatthew@pointloma.edu](mailto:jmatthew@pointloma.edu) - Jessica Matthews

**Professional Wellness & Health Coach Certification** at **Real Balance Global Wellness Services Inc.**

Email: [deborah@realbalance.com](mailto:deborah@realbalance.com) - Deborah Arlosky

**Certificate of Graduate Study in Wellness Coaching** at **Rowan University**

Email: [globalstudent@rowan.edu](mailto:globalstudent@rowan.edu)

**Certificate of Achievement in Health and Wellness Coaching** at **San Diego Mesa College**

Email: [rmhernan@sdccd.edu](mailto:rmhernan@sdccd.edu) - Ramiro Hernandez

**B.S. in Health and Wellness Coaching** at **Southern Connecticut State University, Dept. of Public Health**



Email: [conroyb1@southernct.edu](mailto:conroyb1@southernct.edu) - Britt Conroy

**M.A. Integrative Health & Wellbeing Coaching; Certificate, Post-Baccalaureate Integrative Health & Healing-Health Coaching Track** at **University of Minnesota**

Email: [csh-academics@umn.edu](mailto:csh-academics@umn.edu) - Christina Owen

**Master of Science in Integrative Health and Wellness** at **University of West Georgia**

Email: [finaid@westga.edu](mailto:finaid@westga.edu)

**Health and Wellness Coaching Certificate** at **UW Stevens Point**

Email: [noah.lamaide@uwsp.edu](mailto:noah.lamaide@uwsp.edu) - Noah LaMaide





The National Board for Health & Wellness Coaching (NBHWC) is overseen by a board of directors, and supported by committees composed of volunteers and staff members who seek to advance the profession of health & wellness coaching.

Shortly after forming in 2012, the organization established a Job Task Analysis (JTA) for the industry, which was validated by more than 1,000 practicing health & wellness coaches. It has since been expanded to the HWC Content Outline, which now serves as the framework for the National Board Certification Examination, and the training and education standards that programs adhere to when applying for NBHWC approval.

In 2016, the organization began working with the National Board of Medical Examiners ([nbme.org](http://nbme.org)) to establish a board certification examination, which has since certified more than 12,000 health & wellness coaches who work in the fields of healthcare, employee wellness, government, and private practice. The National Board Certified Health & Wellness Coaching community is composed of trained, educated coaches, who are passionate about working with patients and clients for better health outcomes.

### **NBHWC Mission**

To champion the advancement of health and wellness coaching through evidence-informed standards of education, training, credentialing and research.

### **NBHWC Vision**

The NBHWC envisions a world where all people have the opportunity to thrive, including with the support of qualified health and wellness coaches.

[www.NBHWC.org](http://www.NBHWC.org)